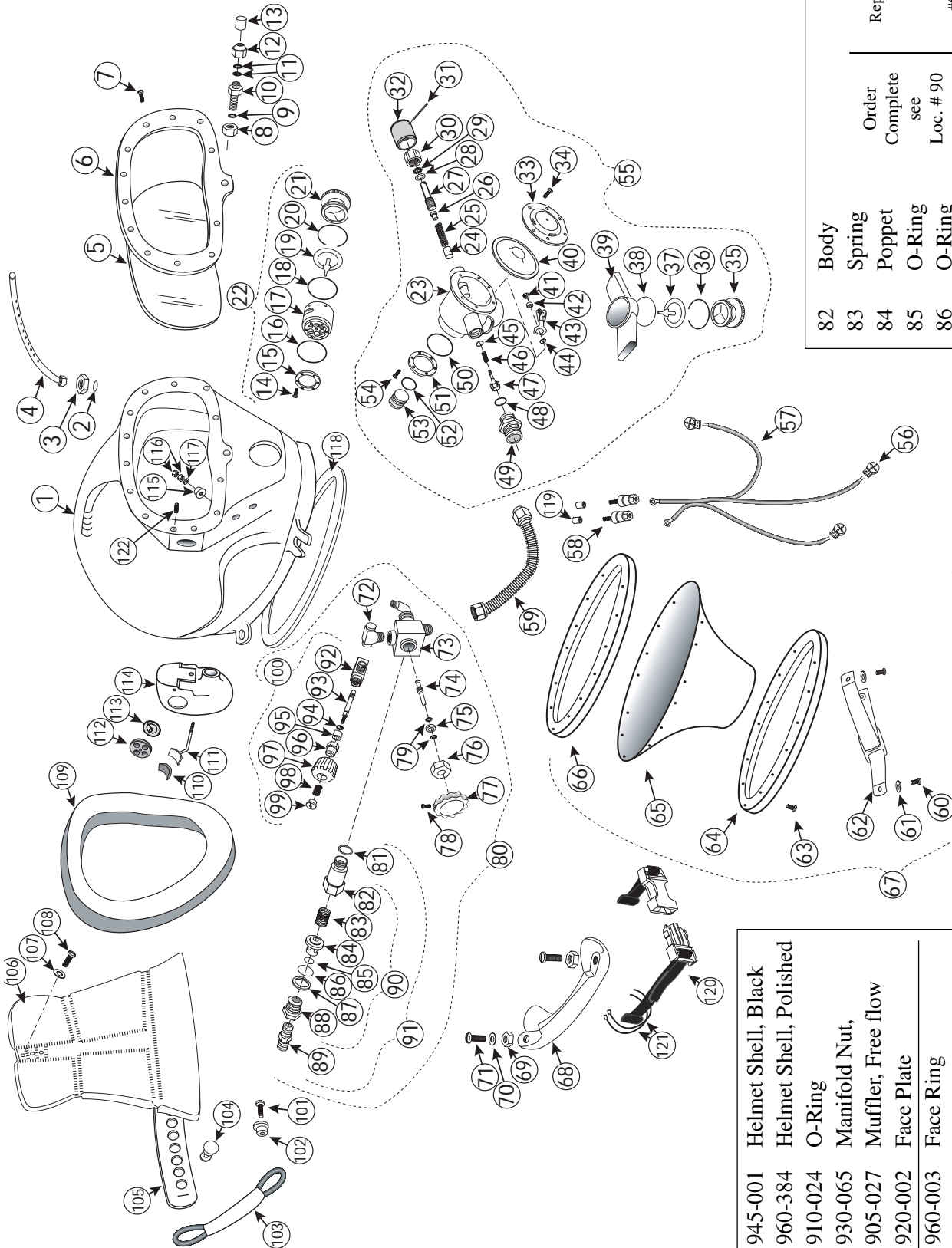


# MILLER 400 SERIES DIVING HELMET



	Order Complete see Loc. # 90	For Replacement Parts Order Kit #525-330
82	Body	
83	Spring	
84	Poppet	
85	O-Ring	
86	O-Ring	
87	Wiper	
88	Seat	

**Product Changes**  
 Following publication of this drawing, certain changes in standard equipment, options, prices and the like may have occurred which would not be included in these pages. Your Authorized Miller dealer is your best source for up-to-date information on any of these products. © Miller Diving, Inc. reserves the right to change product specifications at any time without incurring obligations.

1	945-001	Helmet Shell, Black
6	960-384	Helmet Shell, Polished
2	910-024	O-Ring
3	930-065	Manifold Nut,
4	905-027	Muffler, Free flow
5	920-002	Face Plate
7	930-017	Face Ring
8	930-075	Nut, Slotted
9	930-012	Washer
10	950-076	Nose Device Housing

11	510-008	O-ring	46	535-804	Spring	89	555-117	Adapter
12	950-078	Packing Nut, Nose Device	47	545-026	Inlet Valve	90	555-195	One Way Valve
13	550-252	Knob, Nose Device	48	510-014	O-ring	91	505-060	One Way Valve Assembly
14	930-047	Screw	49	950-082	Inlet Seat	92	950-348	Valve Body
15	950-100	Retainer Plate, Side Exhaust	50	910-058	O-Ring	93	550-138	Stem
16	910-101	O-Ring	51	950-057	Retainer Plate, Regulator	94	530-095	Washer
17	950-102	Side Exhaust Body	52	910-073	O-Ring	95	520-024	Packing
18	910-103	O-Ring	53	950-072	Mount Tube, Oral Nasal	96	550-254	Packing Nut
19	910-029	Exhaust Valve	54	930-017	Screw	97	520-025	Knob, Control
20	930-104	Clip Ring	55	905-140	Regulator Assembly (painted)	98	535-802	Spring
21	950-105	Exhaust Handle	905-340	Regulator Assembly (polished)	99	550-250	Lock Nut	
22	905-133	Side Exhaust Assembly	915-036	Microphone / Earphone	100	905-348	Emergency Valve Assembly	
23	945-080	Regulator Body, (Black)	915-034	Speaker Wire Assembly	101	930-017	Screw	
24	960-304	Regulator Body, (Polished)	515-035	Binding Post	102	950-110	Band Button	
25	550-060	Piston	905-055	Demand Tube & Guard	103	905-108	Neck Band	
25	535-807	Spring Set	930-112	Screw	104	950-107	Adjustment Button	
26	550-059	Spacer	930-423	Washer	105	910-410	Adjustment Strap	
27	550-058	Adjustment Shaft	905-323	Chin Strap	106	910-406	Head Harness	
28	520-032	Washer, Teflon	930-017	Screw	107	930-109	Washer	
29	510-011	O-Ring	960-016	Neck Ring, Lower	108	930-106	Screw	
30	950-097	Packing Nut, Reg. Adj,	910-018	Neck Seal, Neoprene	109	910-005	Face Seal	
31	530-601	Roll Pin	960-015	Neck Ring, Upper, Tapped	110	510-575	Nose Device Pad	
32	950-098	Adjustment Knob	905-135	Neck Ring Assembly	111	545-015	Nose Device	
33	960-046	Regulator Cover (Black)	960-006	Cam Handle	112	950-369	Valve Body, Oral Nasal	
34	930-047	Screw	930-068	Nut	113	510-552	Valve Oral Nasal	
35	950-105	Exhaust Handle	930-012	Washer	114	910-070	Oral Nasal	
36	930-104	Clip Ring	930-011	Screw	115	915-447	Standoff	
37	910-030	Exhaust Valve	955-111	Elbow	116	530-308	Nut	
38	910-103	O-Ring	945-064	Manifold Valve Body	117	530-525	Washer	
39	910-059	Deflector	950-063	Valve Stem, Manifold Valve	118	920-014	Neck Ring Gasket	
40	910-081	Diaphragm	920-062	Teflon Packing, Manifold Valve	119	915-445	Insulation Sleeve	
41	530-303	Adjustment Nut	950-060	Packing Nut, Manifold Valve	120	905-175	Locking Strap Assembly	
42	550-052	Spacer	960-025	Handle, Manifold Valve	121	520-039	Tie Wrap	
43	545-038	Roller Lever	930-017	Screw	122	930-285	Set Screw	
44	530-506	Washer, S.S.	930-061	Washer				
45	530-505	Washer, Brass	905-134	Manifold Valve Assembly				
			510-483	O-ring				